

The logo for the Buffalo Niagara Partnership features a green arch over the text "BUFFALO NIAGARA PARTNERSHIP" in white, bold, sans-serif capital letters.

# **BUFFALO NIAGARA PARTNERSHIP**

---

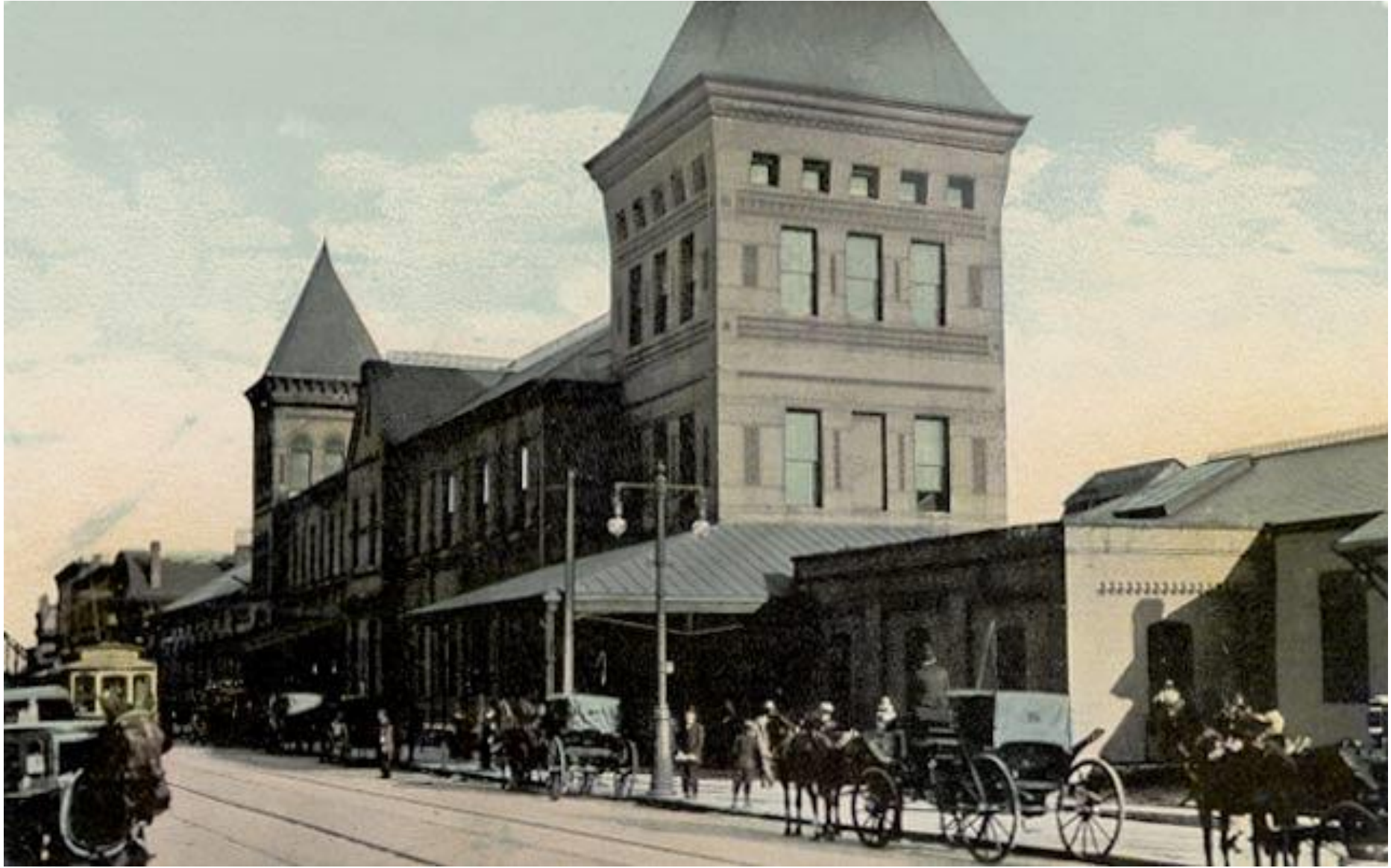
## **Buffalo Exchange (BFX)**

**Considering A Downtown Station  
from a Business Community Perspective**

---



# The Next Phase for Exchange St.



# A Business Perspective

What are our goals?

# A Business Perspective

## 1. Downtown

- Key Infrastructure & Place-making Investment

## 2. The Region

- Component of building a more connected community

## 3. Inter-Metropolitan

- Integrating Buffalo Niagara as a hub of an international region

# Downtown Investment

## **BUFFALO BUILDING *reuse* PROJECT**



Developed at the Request of Mayor Byron Brown



# Downtown Investment



Buffalo Niagara Medical Campus



An Established Waterfront



Downtown Residences



Streets & Public Space Master Plan



## Legend

Parking

# Repairing Our Fabric





# Repairing Our Fabric

22





# Repairing Downtown's Fabric

The map displays the downtown area of Buffalo, New York, with the Niagara River and Tonawanda National Forest to the west and south. Key streets shown include Court St, Main St, and Broadway. The map is overlaid with several markers: a red circle in the upper center, a cluster of yellow circles with Roman numerals (I, II, III, IV, V) near the riverfront, a red circle near the riverfront, a red line along the riverfront, a teal line along the riverfront, and a yellow circle with a Roman numeral (I) in the lower right. A dashed black line outlines a specific area in the center-right of the map.

# Downtown Investment – Possible Goals

1. Bridge Central Business District with Canalside
2. Integrate Multi-modal Transportation
  - Intercity Rail
  - Metro Rail
  - Plan in Context with Bus Depot
  - Auto & Rideshare accommodation
3. Consider Multi-Use
4. Consider Potential as a Branded Gateway
5. Consider Opportunity for Significant Interior Public Space

# Regional Connectivity

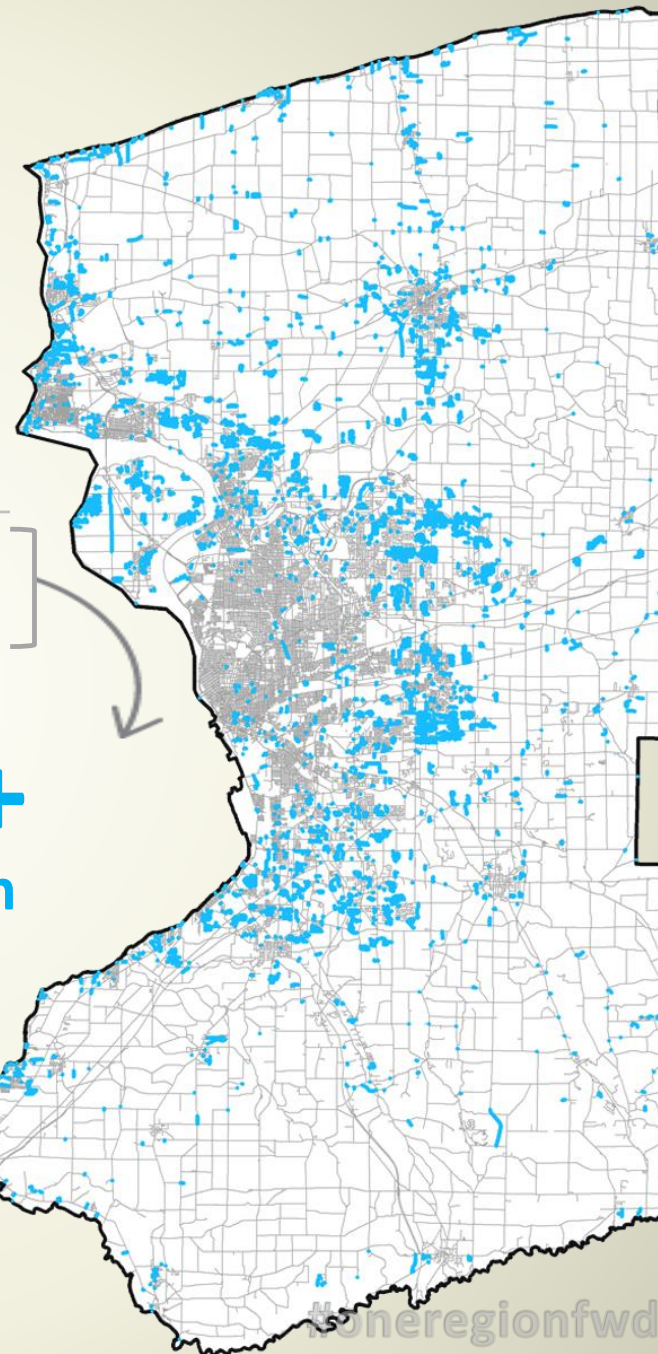


*“Connecting Our Places  
by Expanding and Diversifying  
Our Transportation Options”*





County	Lane Miles added Since 1990	Maintenance Cost Per Lane Mile	Total Cost of New Lane Miles of Roads
Erie	1,013	\$25,328	\$25,667,550
Niagara	30	\$16,166	\$491,470



Since 1990  
we've added  
**\$26,000,000+**  
added annual tax burden  
**525+ miles**  
of new roads



Roads Built  
Since 1990

Roads Built  
Before 1990

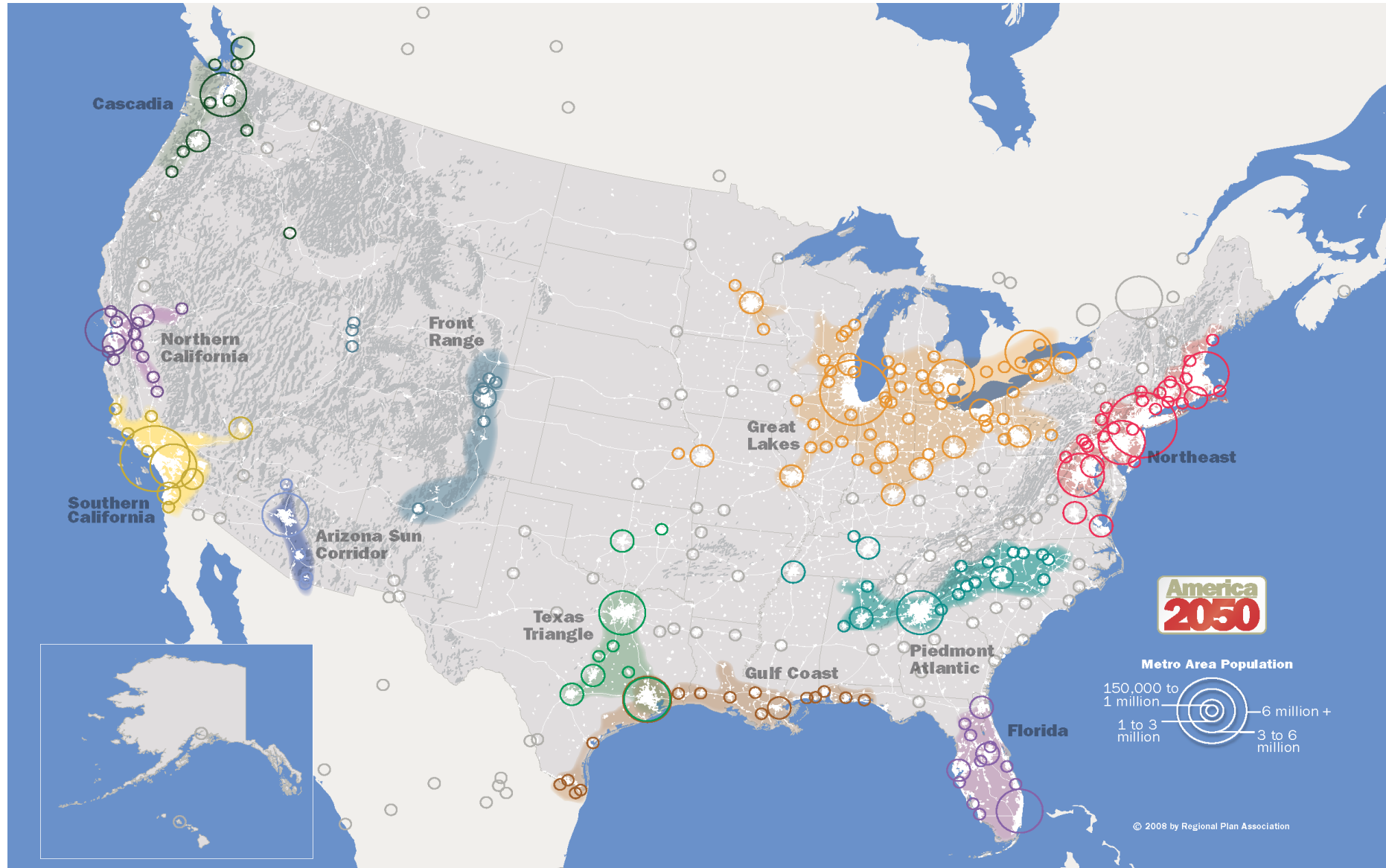
#oneregionfwd

# Regional Connectivity – Possible Goals

Integrate as a component of WNY's multi-modal network

- Component of Mode-Share Network
- Integrate other Modes into Planning and Facilities
- Should Be Capable Accommodate Future NFTA east line
- Recognize this line as a commuter link to Niagara Falls
- Plan in Tandem with Main-Line Station

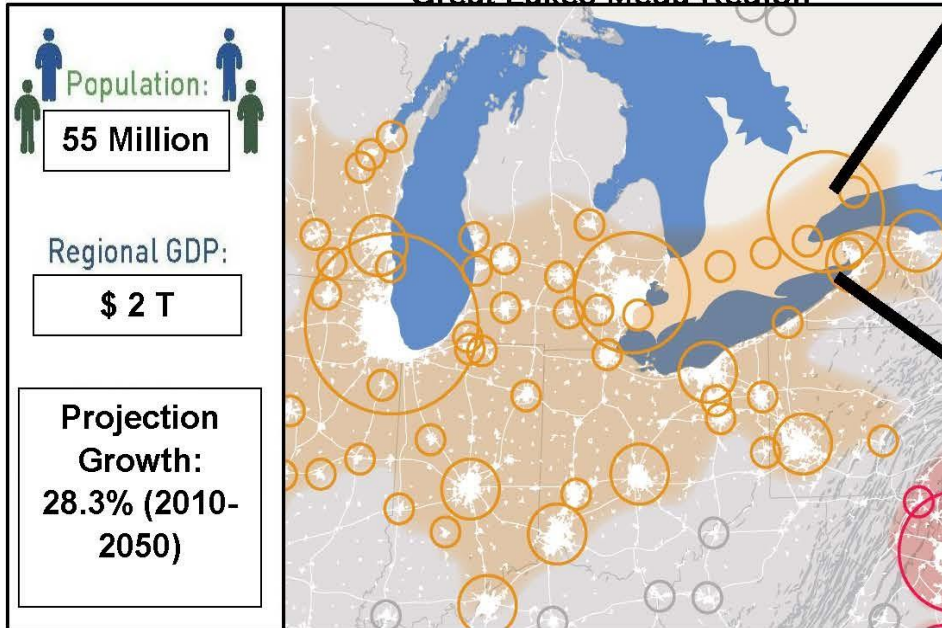
# Inter-Metropolitan: The MegaRegion





# Inter-Metropolitan: The MegaRegion

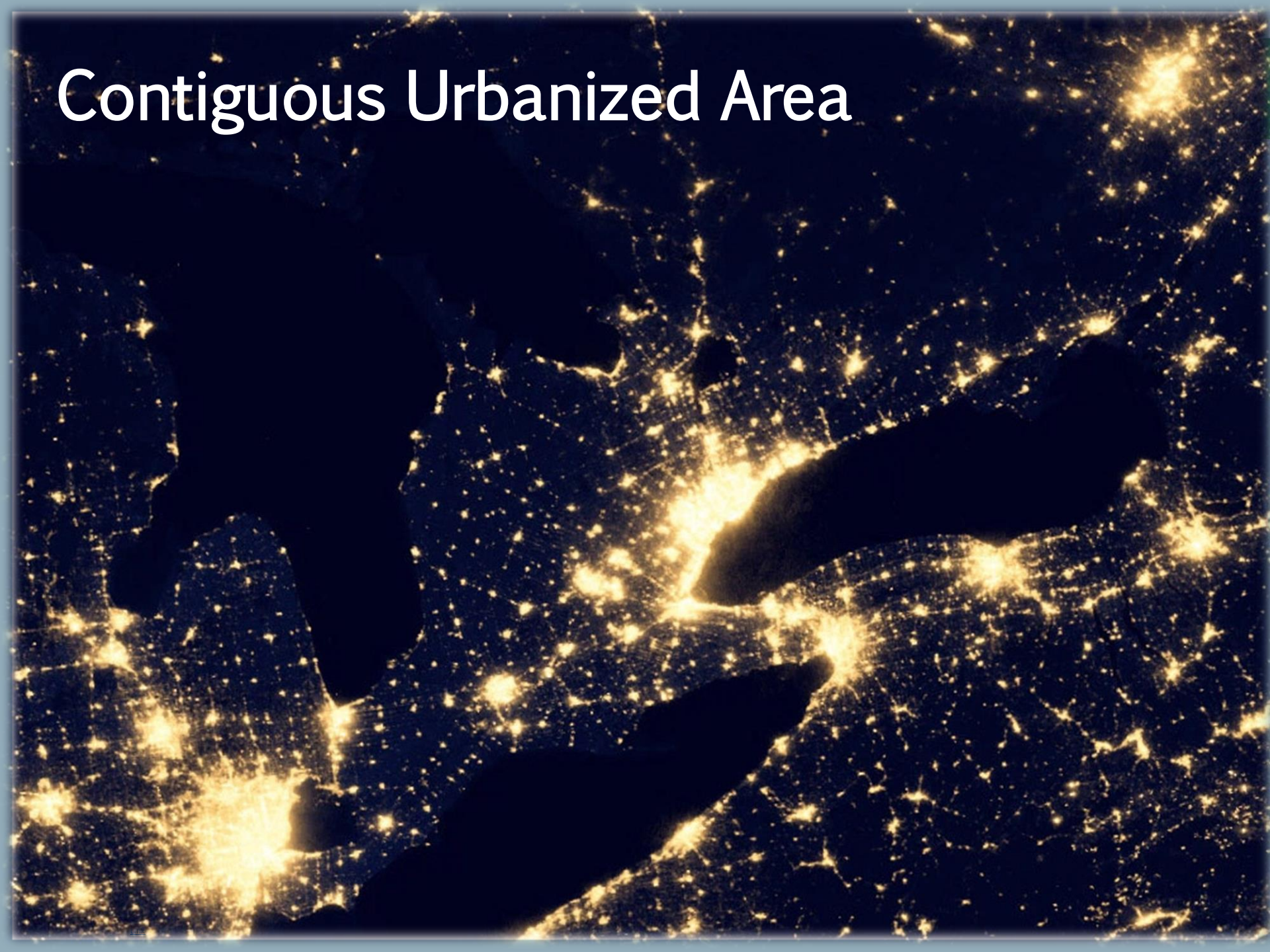
Great Lakes Mega-Region



Bi-National Golden Horseshoe

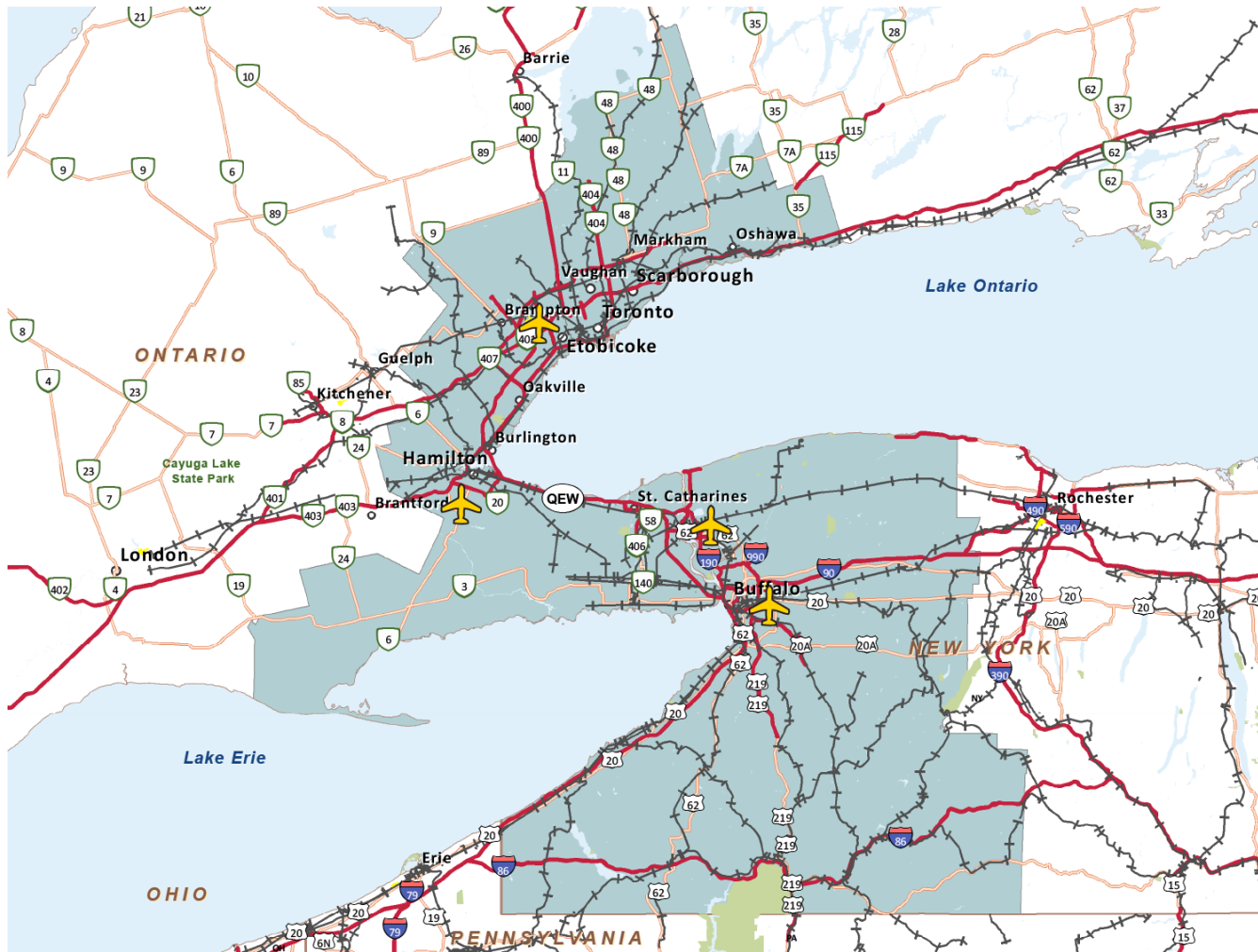


# Contiguous Urbanized Area





# Borderless Infrastructure Network



## Highways

- I-90, I-190, I-290, QEW

## Railroads

- 4 class 1 railroads: CSX, NS, CP, CN

## Airports

- Buffalo-Niagara
  - 5.1 million passengers
  - Nearly 2 million Canadian passengers
- Niagara Falls, NY
  - 200,000 passengers
  - 175,000 Canadian passengers
- Hamilton
  - 342,000 passengers
- Toronto-Pearson
  - 38 million passengers

**BUFFALO NIAGARA  
PARTNERSHIP**



# Gateway Location



- Cities/Regions within a one day drive include:
  - NY/NJ
  - Chicago
  - Boston
  - Montreal
  - DC/Baltimore
  - Detroit
- Population within a 10 hour drive exceeds 120 million.
- Buffalo-Niagara is a gateway between USA & Canada
- International Trade Gateway serves as an inland port for Canada bound cargo.

# Buffalo Niagara Partnership Priorities

What are some of the  
Business Community's priorities now?

# Buffalo Niagara Partnership Priorities

1. Implementation & Alignment with One Region Forward
2. Investment & Expansion of Transportation Infrastructure
  - a. Transportation Infrastructure Capital Funding
  - b. Increase NFTA System Operations & Improvement Allocations
  - c. Transit Options Amherst & Canalside/Cobblestone Advancement
  - d. Ridesharing Legislation
  - e. Acceleration of Cars Sharing Main Street
3. Transit Oriented Development
  - a. Adaptive Reuse Policy
  - b. Asbestos Remediation Tax Credit/Reform
  - c. Value-Capture Infrastructure Financing





Thanks!