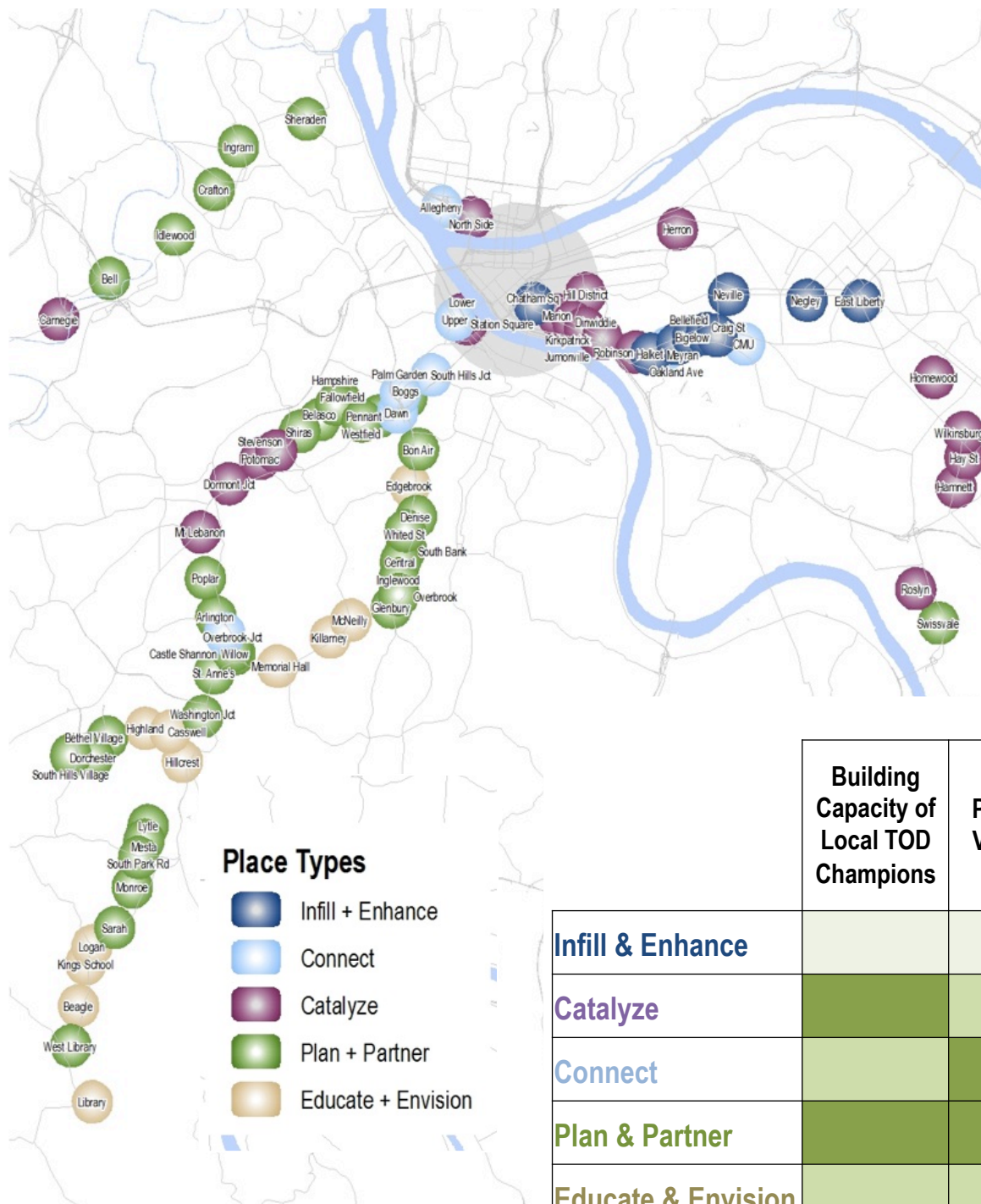


**An initiative of the Pittsburgh Community Reinvestment Group**



# The Typology prioritizes implementation strategies

	Building Capacity of Local TOD Champions	Planning/Visioning	Station Area Infrastructure (bike/ped, stormwater)	Community and Economic Revitalization	Catalytic Development
<b>Infill &amp; Enhance</b>					
<b>Catalyze</b>					
<b>Connect</b>					
<b>Plan &amp; Partner</b>					
<b>Educate &amp; Envision</b>					



# 1. Encourage transit that supports TOD



**GoBurgh.org**

An initiative of the Pittsburgh Community Reinvestment Group





## 2. New funding for small- to mid-sized infrastructure



**GoBurgh.org**

An initiative of the Pittsburgh Community Reinvestment Group





### 3. Stable funding for planning, visioning



A Transit-Based  
Community Plan for  
Homewood &  
Point Breeze North



South Hills  
Transit Revitalization  
Investment District  
Planning Study

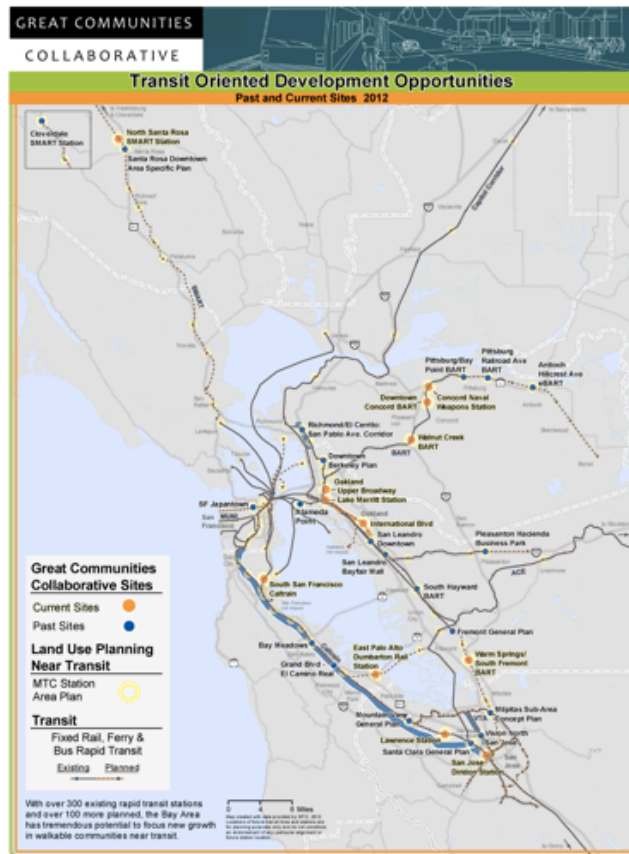


April 2012  
Homewood & Point Breeze North  
Communities • Pittsburgh Urban  
Redevelopment Authority

**GoBurgh.org**

An initiative of the Pittsburgh Community Reinvestment Group

## 4. Build capacity at the local scale



Wilkinsburg CDC

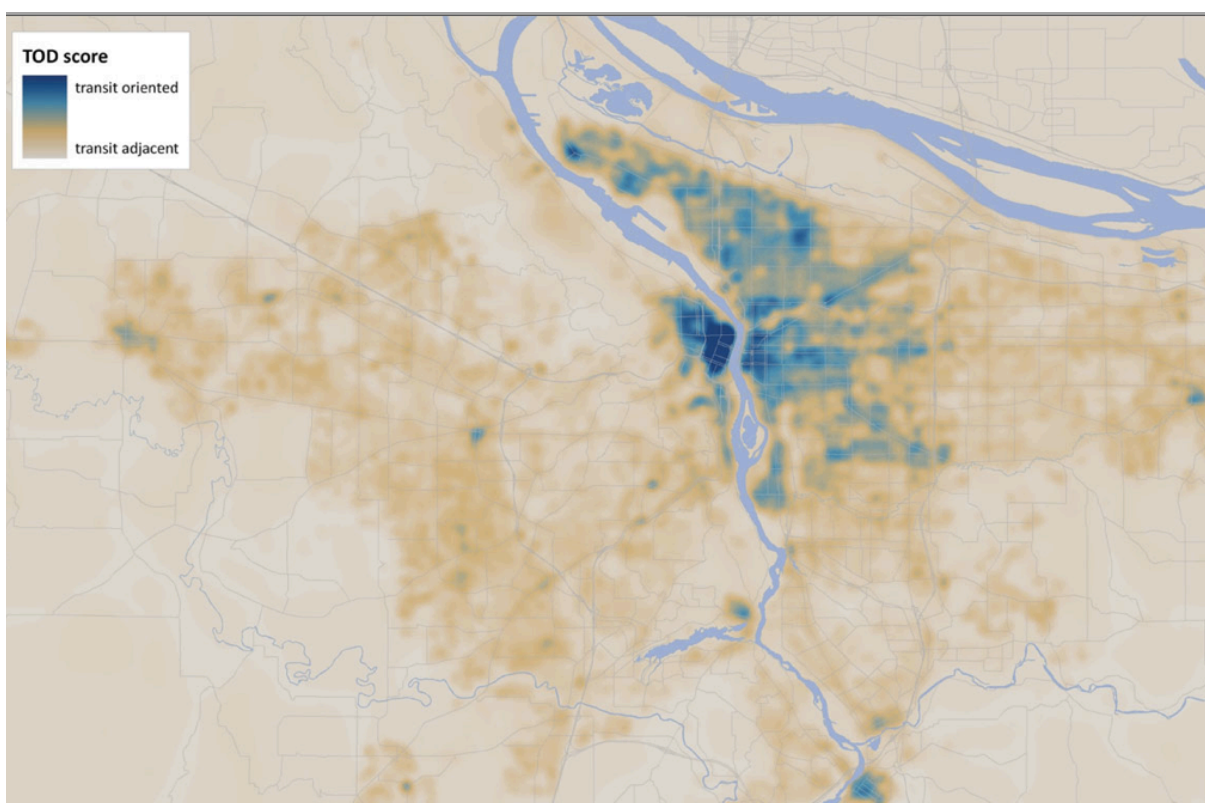
**GoBurgh.org**

An initiative of the Pittsburgh Community Reinvestment Group





## 5. Use typology approach in regional efforts



**GoBurgh.org**

An initiative of the Pittsburgh Community Reinvestment Group



# Where does PCRG go from here?

- Working with regional partners on compact community reinvestment strategies
- Develop corridor working groups
- Build member capacity
- Convergence of PCRG functional areas for connected, strategic, place-based revitalization
- Advocacy for new sources of funding
- Strengthening partnerships with developers, local government, financial partners





**GoBurgh.org**

An initiative of the Pittsburgh Community Reinvestment Group





# Join us online, share your thoughts.

View our Blog Share    

**GoBurgh** About Us Transit Yes! Connect Join the Movement

#ELLO

**Post Your Pic**  
Click Here

**YES. It's a powerful word, and a positive one.**  
learn more



@transityes

#### Who is GoBurgh...? You are!

We're a convener. We research, plan and advocate. We're working for a sustainable and vibrant transit infrastructure in the Pittsburgh Region. But enough about us. If you live in Allegheny or its six surrounding counties, GoBurgh is about you. You have a voice – GoBurgh will help make it heard.

#### How Can I Help?

There are plenty of ways you can show your support, get involved and amplify your voice, and most of them you can do from right where you're reading this now: sign up for our mailing list, "get pinned," follow, like and

#### Transit News & Events

**The Port Authority Deserves Strong, Equitable, Transparent, Visionary Leadership**  
GoBurgh press release distributed to the media on Thursday, January 31, 2013.

learn more

**TOD Strategy and Typology Release Event**  
02/07/13

learn more



facebook.com/transityes

**GoBurgh.org**

An initiative of the Pittsburgh Community Reinvestment Group