



Identifying TOD Opportunities: A Strategy

Chris Sandvig – Regional Policy Director
Pittsburgh Community Reinvestment Group's GoBurgh Initiative

September 14, 2013

GoBurgh.org

An initiative of the Pittsburgh Community Reinvestment Group



Pittsburgh Community Reinvestment Group

- Incorporated 1988
- Focus primarily on:
 - Transit & Transit-Oriented Development
 - Fair lending practices
 - Neighborhood access to capital
 - Capacity of local groups and actors
 - Vacant property reclamation and repurposing
 - Public safety
 - Neighborhood revitalization



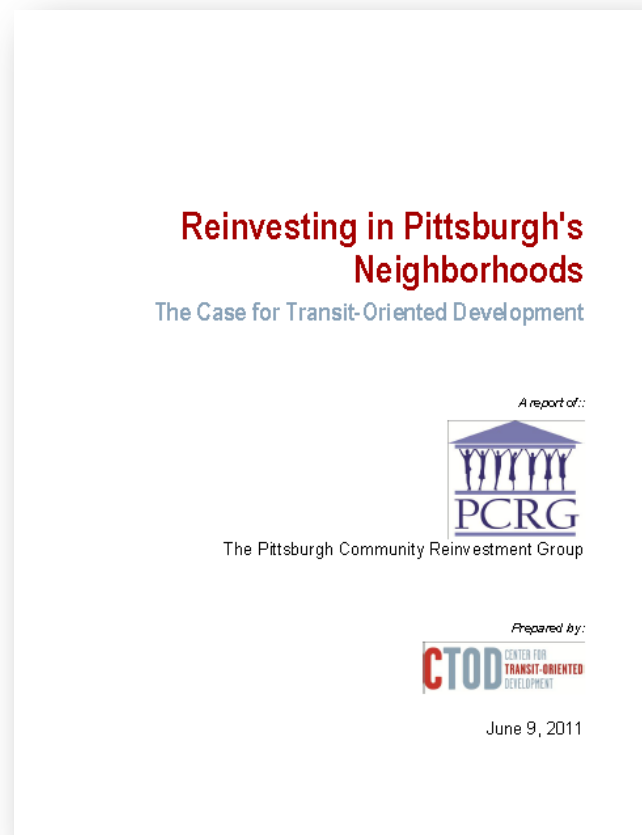
GoBurgh.org

An initiative of the Pittsburgh Community Reinvestment Group



What brought PCRG to transportation?

- 2009 PCRG TOD Symposium
- Member demand
- Lack of organized, informed, community voice
- Neighborhood revitalization's reliance on transit
- Disconnected legacy system



GoBurgh.org

An initiative of the Pittsburgh Community Reinvestment Group



So, what is GoBurgh?

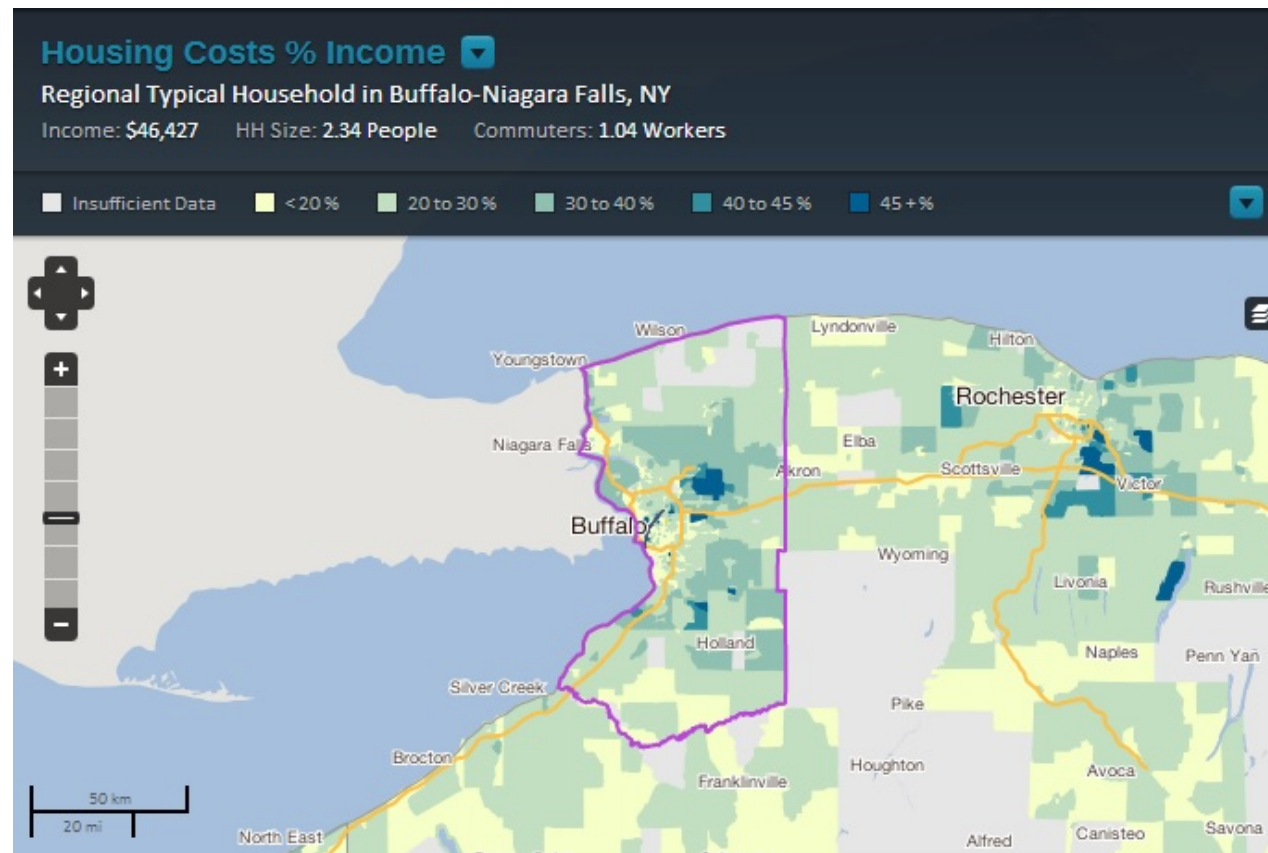
- Leading non-partisan community voice on Pittsburgh's transit issues;
- Knowledge-based, research-backed transit-oriented public policy and advocacy;
- Convener of organizations and communities working toward sustainable and vibrant transit infrastructure;
- Leverages transportation assets as community revitalization and economic development tools.
- Educate the public and stakeholders on transit's vital role in the region;
- Work with communities to determine what county residents want the transit system of the future to do for them.

GoBurgh.org

An initiative of the Pittsburgh Community Reinvestment Group



What is the real cost of living?

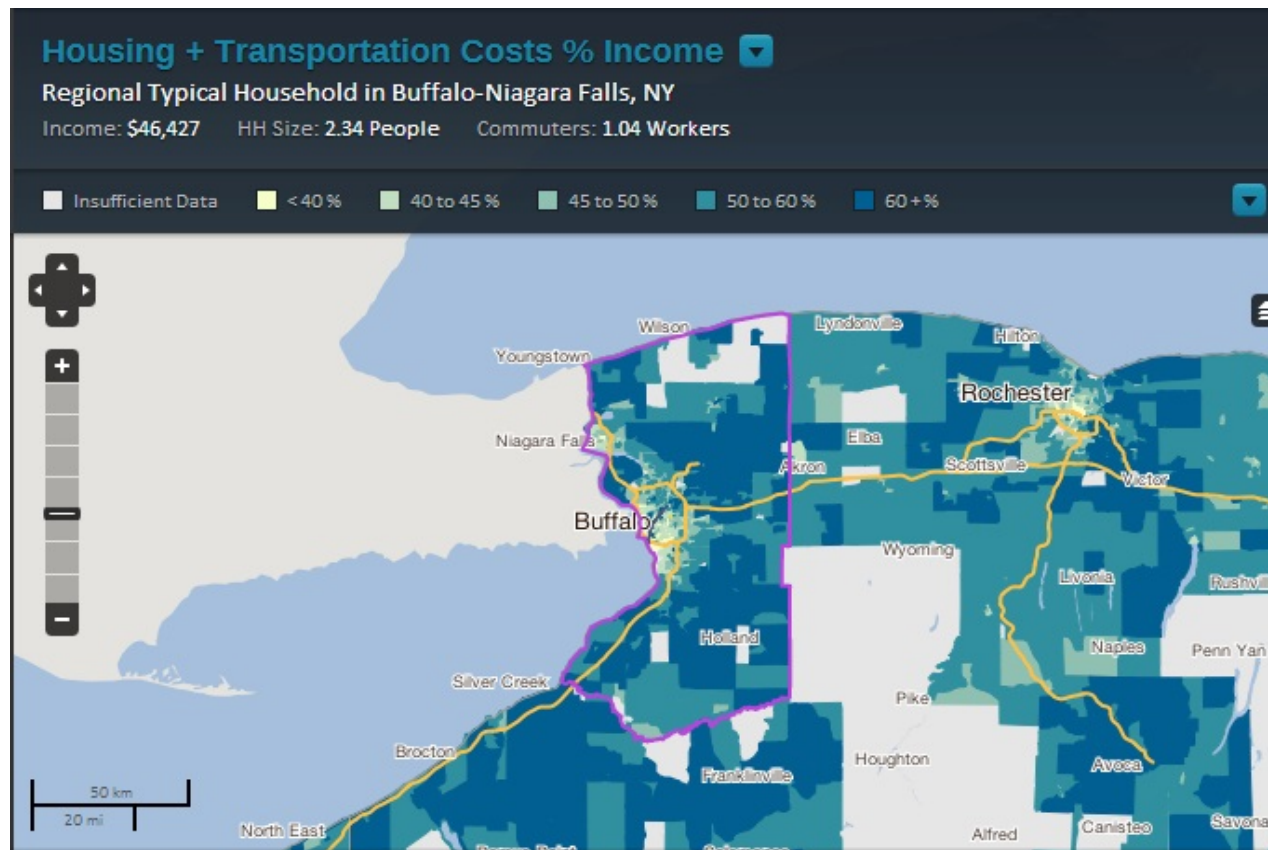


GoBurgh.org

An initiative of the Pittsburgh Community Reinvestment Group



What is the real cost of living?

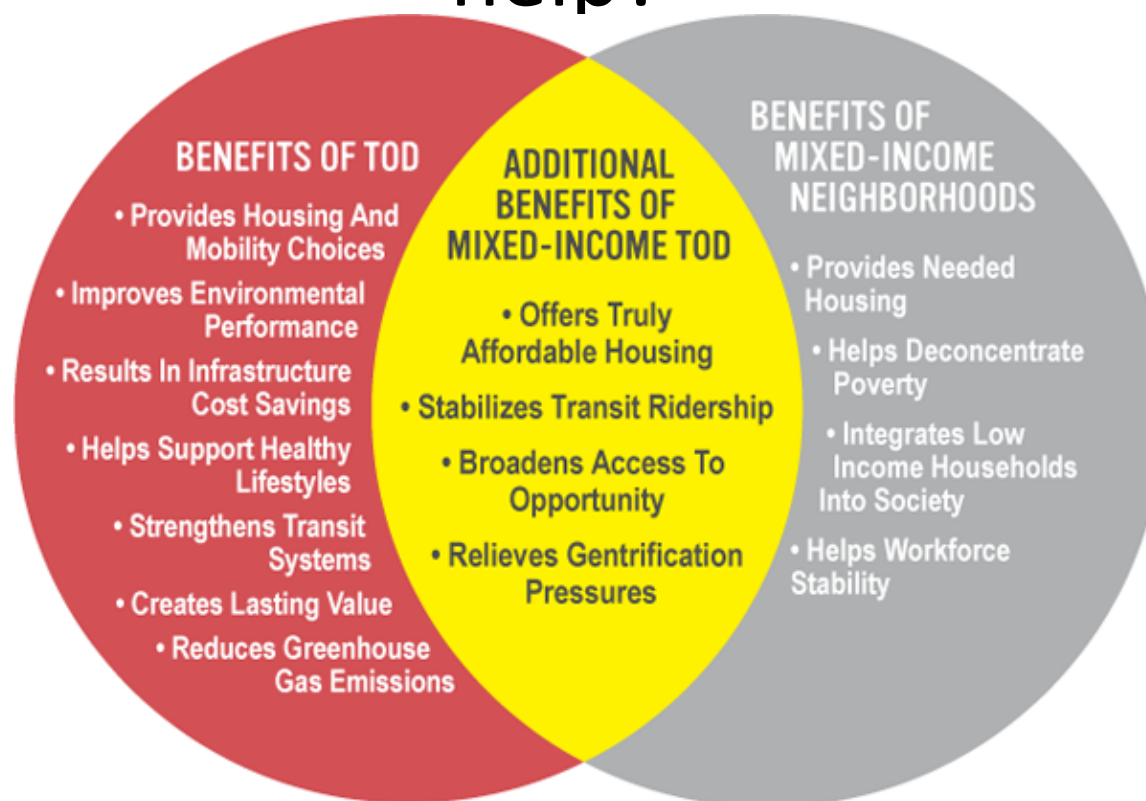


GoBurgh.org

An initiative of the Pittsburgh Community Reinvestment Group



Transit-oriented development: how can it help?



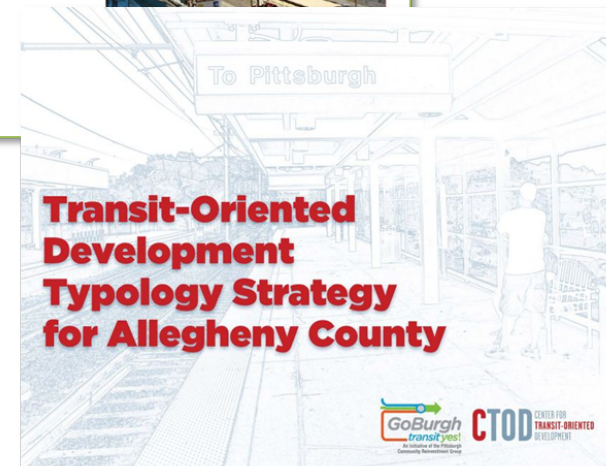
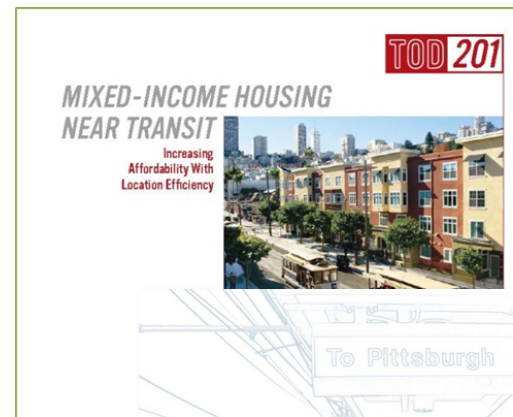
GoBurgh.org

An initiative of the Pittsburgh Community Reinvestment Group



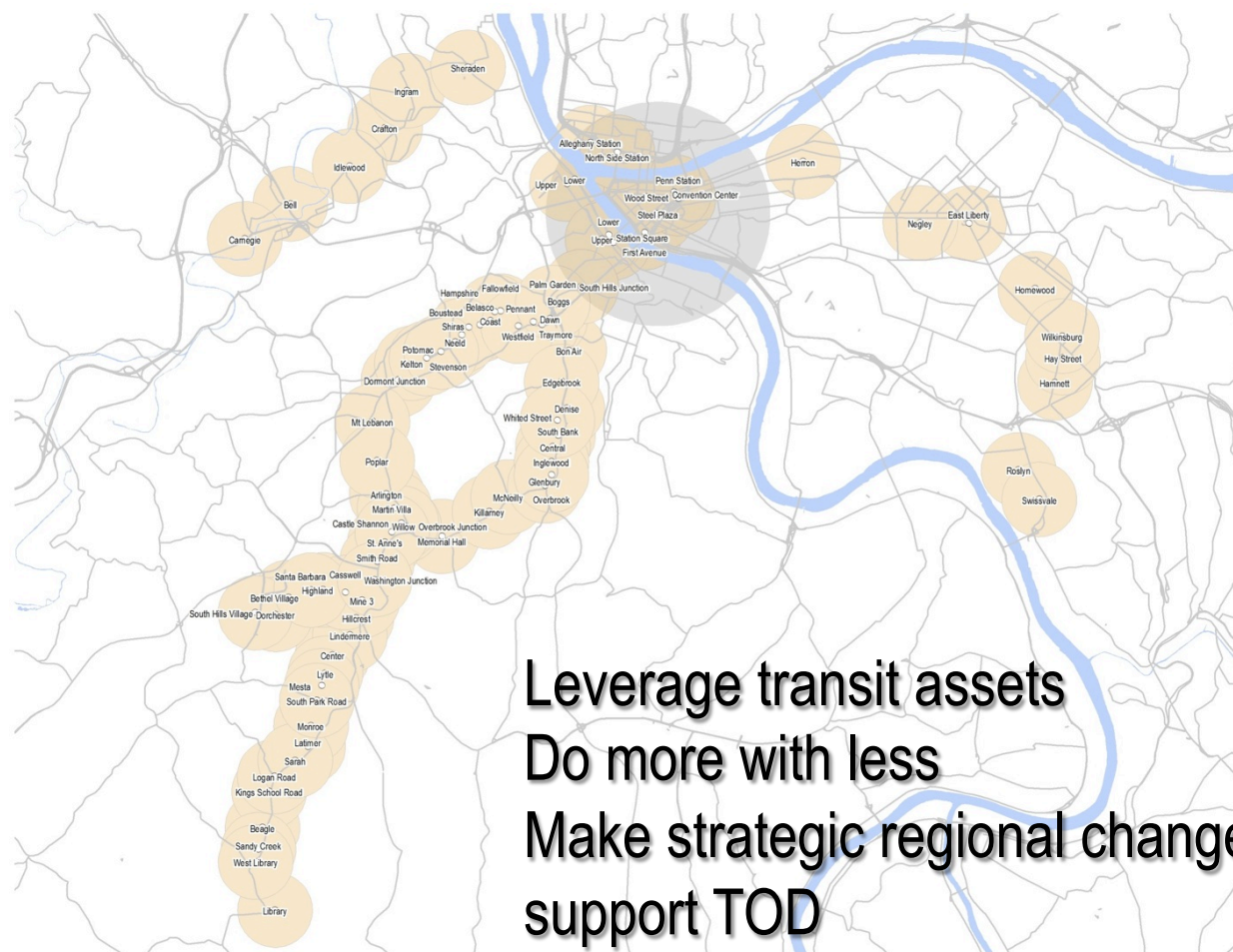
How do we get there?

- Determine station area priorities
- Maximize transit access to jobs + major destinations
- Build complete communities with jobs, vital services
- Address barriers to walkability through civic improvements
- Ensure mixed-income housing at stations



GoBurgh.org

An initiative of the Pittsburgh Community Reinvestment Group



Leverage transit assets
Do more with less
Make strategic regional changes to support TOD

GoBurgh.org



Building a Typology – The Approach

People + Places



Investment Potential



GoBurgh.org

An initiative of the Pittsburgh Community Reinvestment Group