



Great partnerships → Great Region

Citizens for Regional Transit (CRTC)
United Way of Buffalo & Erie County, Buffalo, NY
January 20, 2016



A NEW WAY TO PLAN FOR BUFFALO NIAGARA

PLAN RELEASE: FEBRUARY 2015



- Released at the final “Community Congress” of the planning phase
- ~180 citizens came out to celebrate, network and learn about the next steps for 1RF
- Display remained in the Central Library for several weeks following the event

WHAT COULD WE DO DIFFERENTLY?

Working Teams focused on defining performance metrics, establishing goals for the future and developing strategies aimed at reaching those goals.

100+
Subject matter experts
and stakeholders

Our
Values

Working
Teams

TRANSLATING
COMMUNITY
VALUES
INTO
STRATEGIES
AND ACTIONS



Create Great
Places and a
**Thriving
Economy**
through Efficient
Land Use

Connect Our
Places by
Expanding and
Diversifying Our
**Transportation
Options**

**5 Big
Ideas**

and dozens of potential
strategies and actions
to get us there

Provide
**Housing
Choices**
in Neighborhoods
that are Great
Places to Live

Conserve Our
Energy

Promote Renewables
and Prepare for the
Impacts of

**Climate
Change**

Strengthen
Our **Food
Systems**
for a Healthier
Population and
Economy

5 Big Ideas



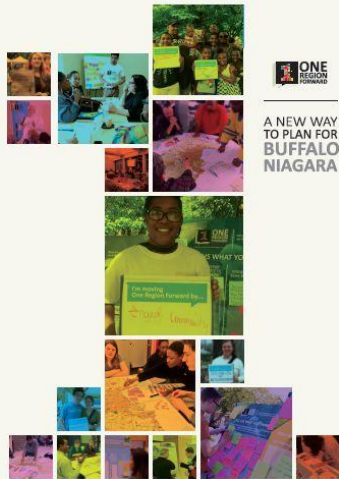
Create Great Places and a Thriving Economy through Efficient Land Use

Provide Housing Choices in Neighborhoods that are Great Places to Live

Conserve Energy, Promote Renewables and Prepare for the Impacts of Climate Change

Connect our Places by Expanding and Diversifying Our Transportation Options

Strengthen Our Food Systems for a Healthier Population and Economy



FEBRUARY 2015
One Region Forward Final Plan



The parties that shaped this plan do not, individually, have the power and authority to direct actions beyond their distinct borders or missions. With that in mind, this document is designed as a **tool to measure progress against shared community values** and recognizes that there are multiple approaches to achieve the regional performance to which we aspire.

MOVING ONE REGION FORWARD BUILDS ON THE EXISTING NETWORK

A plan designed to
be implemented by
many...

A STRONG NETWORK
ALREADY WORKING
ACROSS OUR
REGION

ONE REGION
FORWARD
TAPS INTO THE
NETWORK

WHAT WE'LL NEED TO MOVE FORWARD

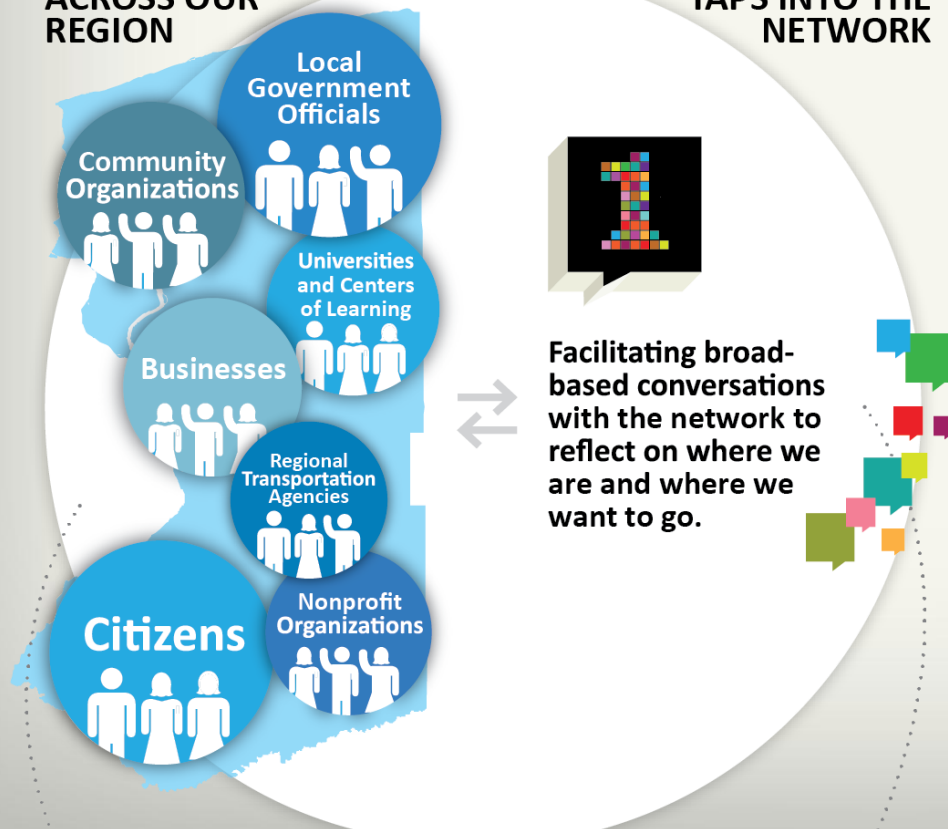
Coordinating Planning & Policies

Making Smart Investments

Fostering Collaborative Partnerships

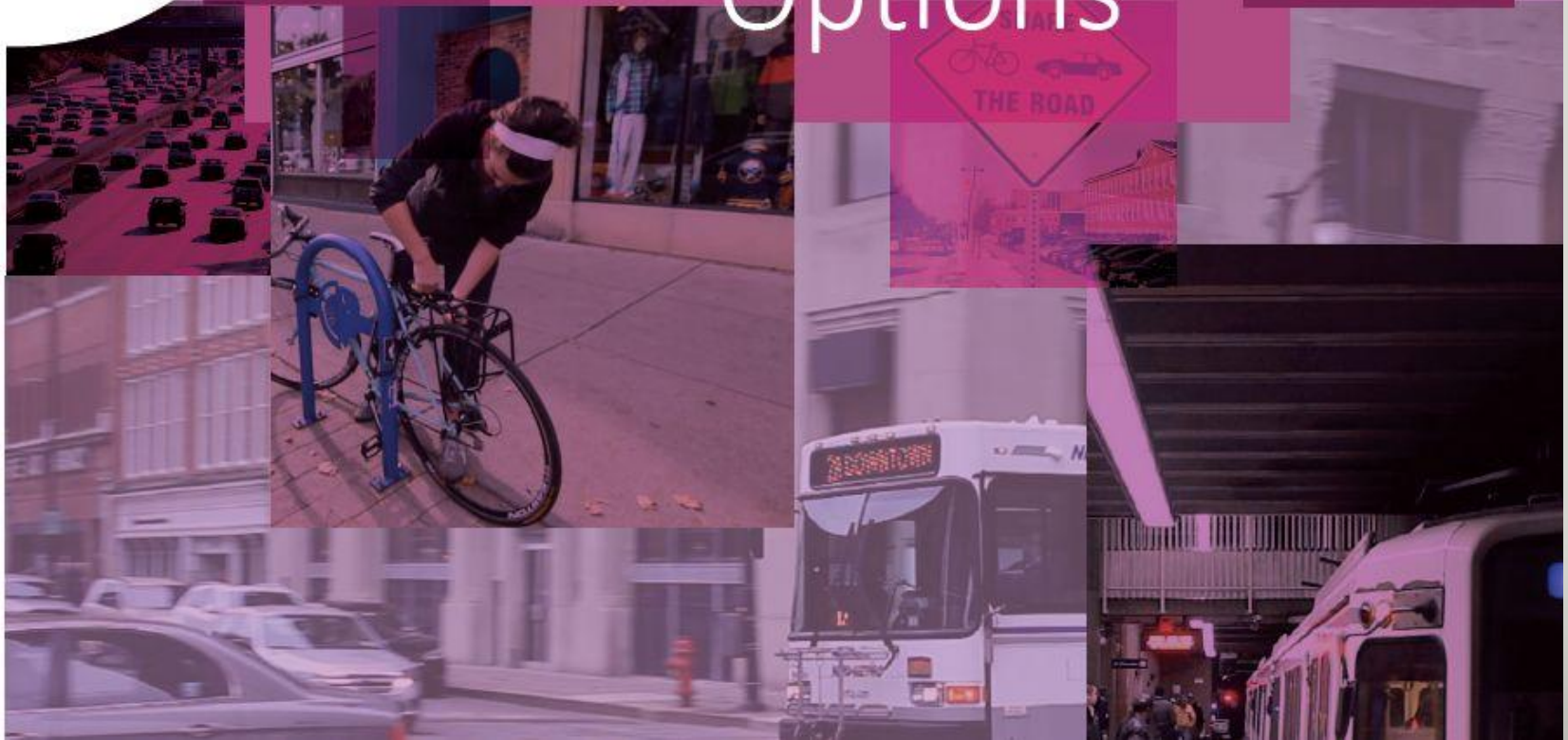
Community Learning and Action

Building Capacity & Tools

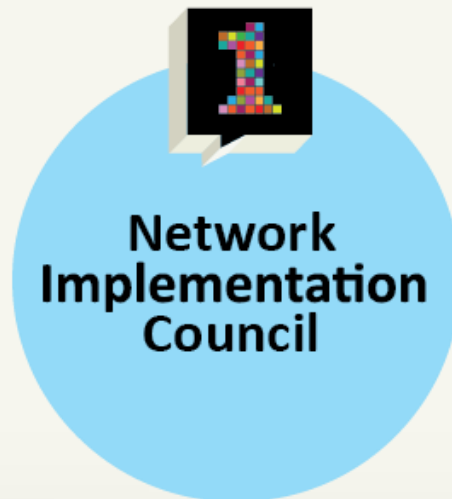


5^{Big} Ideas

Connect Our Places by Expanding and Diversifying Our Transportation Options




Supported by a dedicated group focused on achieving the performance we want as a region



Promote implementation of the plan by:

- Measuring progress across metrics
- Community learning and local capacity support
- Facilitate and promote collaboration

Metrics that tell us
if our actions are
aligning with our
values...



How we'll
know if our
actions are
aligning with
our values



TODAY → FUTURE

One Region Forward Performance Base

Are we concentrating new development where we already have infrastructure?

HOW IT ALIGNS WITH OUR VALUES
Increasing density in urbanized areas reduces infrastructure costs and preserves natural, open space.



WHERE WE
ARE TODAY

68%

of all developed land is within the urbanized area and serviced by a sewer district.

WHERE WE
WANT TO GO



We'll be making progress if we **increase** the share of new development serviced by existing infrastructure.

Are we focusing job growth around our main streets, downtowns and former industrial areas?

HOW IT ALIGNS WITH OUR VALUES
Growing employment opportunities in strategic areas maximizes revenues and limits new costs.



WHERE WE
ARE TODAY

26%

of all regional jobs are in downtowns, Brownfield Opportunity Areas, or near main streets.

WHERE WE
WANT TO GO



We'll be making progress if we **increase** the share of jobs in strategic locations.

Are we conserving natural, open spaces?

HOW IT ALIGNS WITH OUR VALUES
Protecting open space enhances ecosystems vital to a clean and healthy environment.



WHERE WE
ARE TODAY

693

square miles of open space are conserved from development.

WHERE WE
WANT TO GO



We'll be making progress if we **increase** the amount of conserved open space.

Are we increasing public access to our waterfronts?

HOW IT ALIGNS WITH OUR VALUES
The more accessible our shores are, the more opportunity for all to enjoy clean waterways.



WHERE WE
ARE TODAY

83.5

linear miles of shoreline with public access.

WHERE WE
WANT TO GO



We'll be making progress if we **increase** the amount of shoreline with public access.

One Region Forward Performance Base

Are we keeping the finances of local governments in balance?

HOW IT ALIGNS WITH OUR VALUES

Keeping costs and revenues aligned indicates we are living within our means.



WHERE WE ARE TODAY

Total revenues are
0.3%

less than total costs for all local governments.

WHERE WE WANT TO GO

=

We'll be making progress if our total governmental revenues **and** costs are in balance.

Are we reducing the miles we travel in cars?

HOW IT ALIGNS WITH OUR VALUES

By driving less, we save time, money and contribute to a cleaner environment.



WHERE WE ARE TODAY

17.9

daily vehicle miles traveled per person.

WHERE WE WANT TO GO

↓

We'll be making progress if we **decrease** the daily miles we travel by car.

Are more workers commuting via alternative modes of transportation?

HOW IT ALIGNS WITH OUR VALUES

Travel to work by walking, biking, public transit, and carpooling makes our communities and our environment healthier.



WHERE WE ARE TODAY

18%

of the region's workers commute via alternative modes of transportation.

WHERE WE WANT TO GO

↑

We'll be making progress if we **increase** the share of workers commuting via alternative modes of transportation.

Are we building new homes and job centers that are connected by public transit?

HOW IT ALIGNS WITH OUR VALUES

Energy is conserved and our communities become more walkable if we don't have to depend on cars for travel.



WHERE WE ARE TODAY

26%
region's homes

32%
region's jobs

are within areas accessible to transit stops.

WHERE WE WANT TO GO

↑

We'll be making progress if we **increase** the share of homes and jobs accessible to transit.

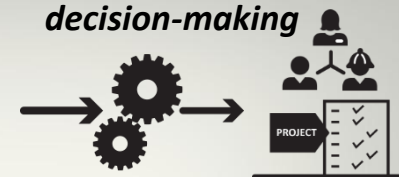
PLAN SUMMARY DISSEMINATION

- **Erie County Age-Friendly Community workshop**
- **Farmland Protection Roundtable**
- **Session #1 of the Citizen Planning School**



REGIONAL STRATEGY DOCUMENTS

Tools to support local
decision-making



[Growing Together](#)

Food Access and Justice Strategy Document

[Resilient Buffalo Niagara](#)

Climate Change Strategy Document

[Complete Communities for a Changing Region](#)

Housing and Neighborhoods Strategy Document

[Fair Housing Equity Assessment](#)

[The Dollars and Sense of Development Patterns](#)

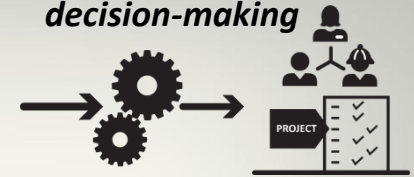
The Buffalo Niagara Regional Report

Find online at:

oneregionforward.org/regional-strategy-documents

MORE ON SCENARIO PLANNING

*Tools to support local
decision-making*



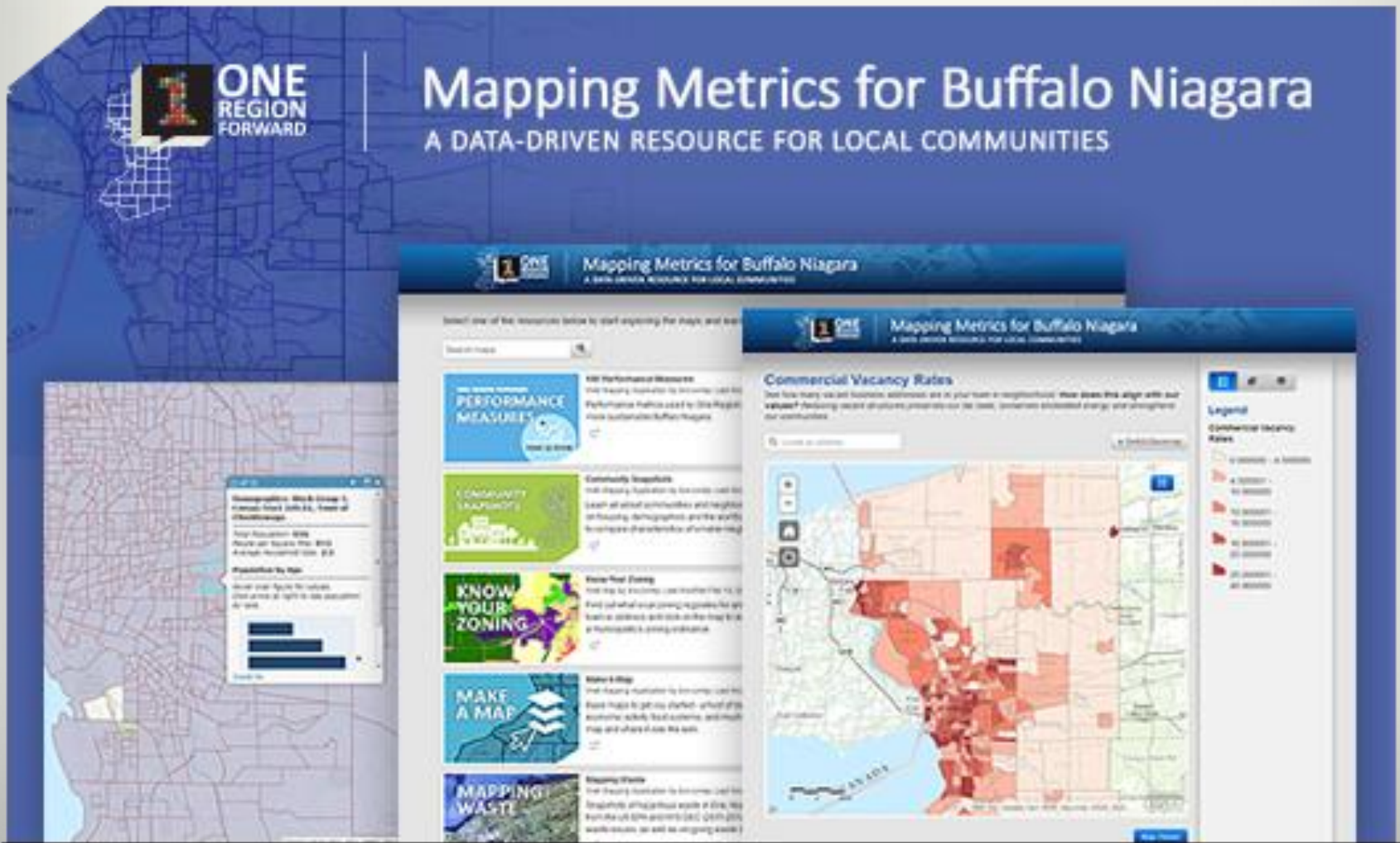
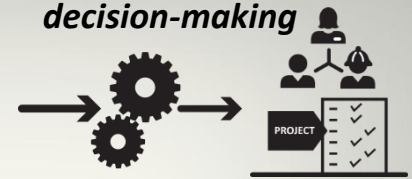
Scenario Planning Pilot Project Studies in Niagara Falls and Niagara Street in Buffalo

**A guidebook to help
communities think about
integrating One Region
Forward into local planning
processes**



ONLINE GIS TOOLS AND MAPS

*Tools to support local
decision-making*



AN EVOLVING WEBSITE

Tools to support local
decision-making



Contact Us



Subscribe to eNews



About Citizen Planning School The Plan Get Involved Tools & Resources

towards a more sustainable Buffalo Niagara

News & Press | Events



February 2015 Community Congress

Celebrate the work of thousands of citizens and hundreds of organizations to create a more sustainable region

Spring 2015 Citizen Planning School

Sign up today for Spring Session! Come learn something new or apply for the Champions for Change program!

A New Way to Plan

Review the plan encompassing almost 3 years of research, community engagement, partnership building and planning.

2014 Champions For Change

Learn how these citizen planners are making a change in their communities.

Citizen Planning School

2015 Idea Summit



IMPLEMENTATION



**ONE
REGION
FORWARD**

Funding Opportunities
through the NYS
Consolidated Funding
Application

FOCUS ON:
Strategic Planning and
Feasibility Studies

DEADLINE: July 30th
www.regionalcouncils.ny.gov





One Region Forward

June 15 at 11:00am · 🌐

Is your village center, neighborhood commercial district, or significant structure in your downtown in need of revitalization? With some investment, these local centers can become valuable assets at not only the local level, to the region as well. NYS's Consolidated Funding Application (CFA) is offering grants up to \$100K through its ESD Strategic Planning and Feasibility Studies program. Encourage your local leaders and officials to find out more information on pages 16-19 of the CFA Resource Document at

https://www.ny.gov/.../fi.../2015_RESOURCESAVAILABLE_FINALV2.pdf

IMPLEMENTATION



**ONE
REGION
FORWARD**



WHAT'S ON DECK FOR 2016?

www.oneregionforward.org

